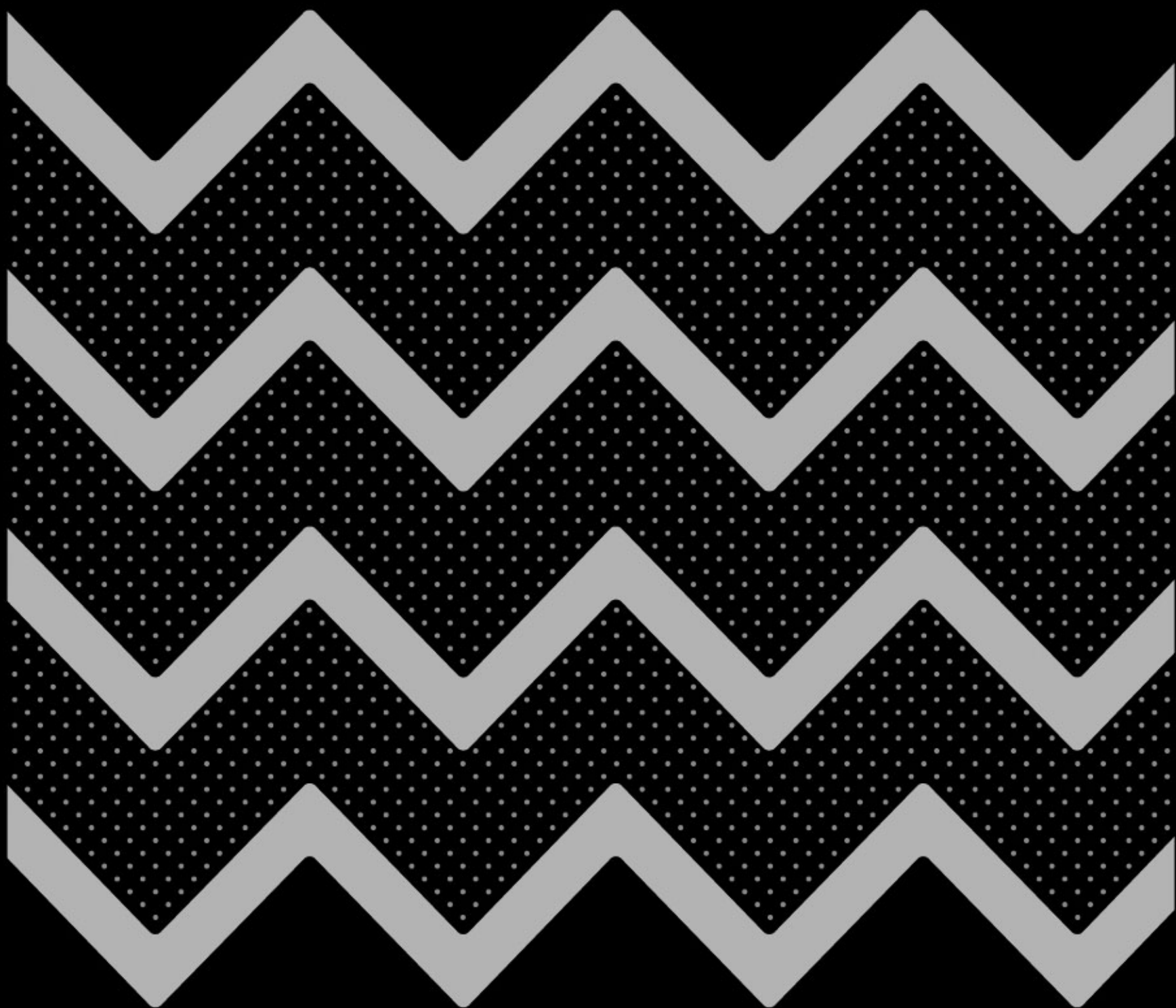


 **KELVIN GIORMANI**



Fashionable Custom-sofa Crafter



Mr. Kelvin Ng and
the award presenter, Ms Jena Hall



by American Society of Furniture Designers
2015

PRISMA II 0392
KELVIN GIORMANI Fall 2014 Collection
Pinnacle Design Achievement Awards 2015
Winner Design in Stationary Upholstery Category



02

03

KELVIN GIORMANI

4D

Leather: 2227 (subject to availability)

04 ONDULARE II S0477



05



06 ONDULARE II S0477

Two options of sofa legs are available. Satin finish stainless steel is always a popular choice.

Dark nickel color finish stainless steel leg is a good option to contrast lighter color leather.



ONDULARE II S0477



ONDULARE II M0477



Optional coffee table (item no. STG3) always comes with a design that matches the sofa seat front frame and legs.



ONDULARE means "ripple." The name comes from the special pattern quilting (stitching) at the side of the arm of Model ONDULARE II (see page 8). The two "boomerang" like pattern together with the profile the arm frame create a visual image of "rippling." The pattern is realized by our new "wide-double stitching" which is the first time being applied to a KELVIN GIORMANI model.

Model ONDULARE III (see photo on right) presents the new leather-crafting feature named "zig-zag pattern sewing alternately perforated," at the arm-side.



Leather: 9402 (subject to availability)
ONDULARE III S0478A

Model ONDULARE IV comes with "gold" or "silver" color genuine leather ornament appearing on the "zig-zag pattern sewing" at the arm-side.



Leather: 0570/89M1 (subject to availability)
ONDULARE IV S0478B



SXR  4LA

Leather: 9407 (subject to availability)

12 ONDULARE I S0476



Model ONDULARE I is the minimalistic version of the model.

Optional headrest delivers additional neck support.



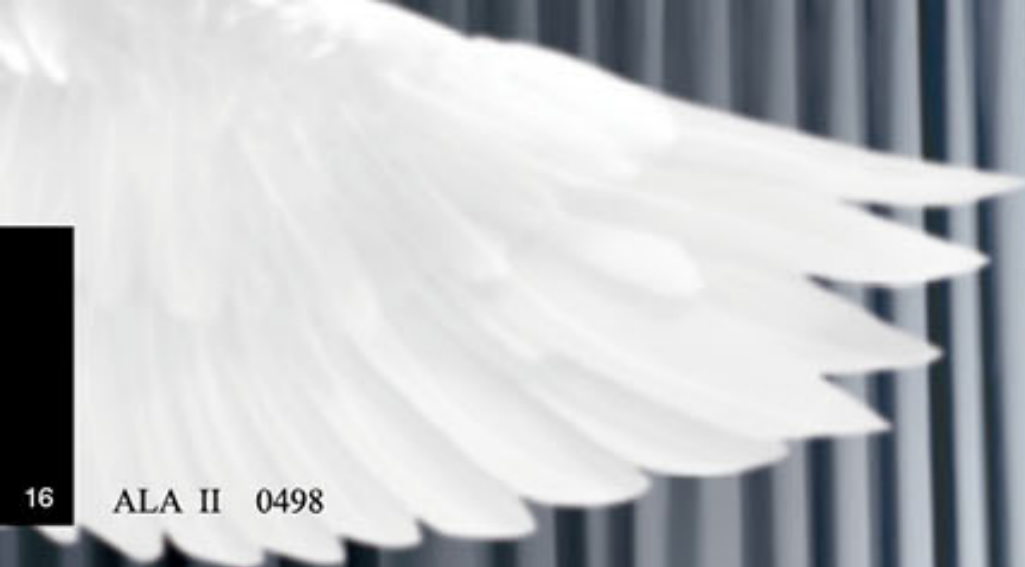
Optional stool (item no. ST2) always comes with a design that matches the sofa seat front frame and legs.



Leather: 7525 (subject to availability)

ALA II 0498





ALA means "wing." The design of Model ALA was inspired by bird wings.



The sofa arm design resembles the beauty of wings. There are 2 versions of Model ALA. Model ALA II presents a wider wing span (sofa arm width) which appears to have a better scale of bird wings.

4D ID
STG3

Leather: 9409 (subject to availability)

ALA I 0497





Model ALA I comes with a narrower arm design when comparing with Model ALA II. For those who care more about space efficiency, Model ALA I will be a better choice.



Optional coffee table (item no. STG3) matches the "wing" design theme.



While you are continuing to view and walk along the side and back frame of Model ALA, the various "levels" of the "wing" become the stunning tiers which create a piece of architecture.

Model ALA is a design piece that should be appreciated from all angles.



Soft pillow-like feather-filled double-back cushions plus Level-5 seating guarantee the comfort.



KELVIN GIORMANI

AC80B-1DV

4D

Leather: 0576/0570-4D (subject to availability)
Leather: 0576/89M2-AC80B-1DV (subject to availability)

26 TRIANGOLO 0458



27



28 TRIANGOLO 0458

TRIANGOLO means "triangular."

Model TRIANGOLO borrows the design elements of Model MULTIPLO (Sept 2012 Collection) and Model DIAMANTE (2014 Collection). Its own design identity comes from the "contrast-strap pattern sewing" effect that forms a lot of triangular graphics throughout the back front, seat front and frame side of the sofa.



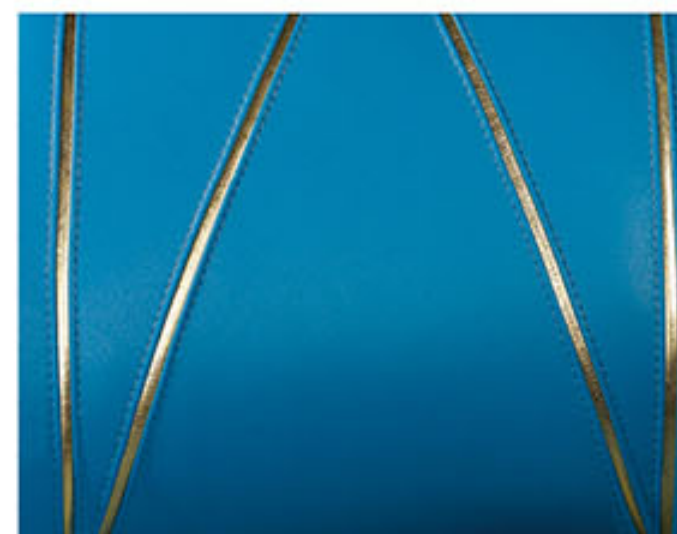
Contrast-strap pattern sewing is a technique while we cut a lot of long and narrow leather straps (about 3cm wide) and sew & stitch them with larger leather pieces of different geometric shapes (such as rectangles, triangles and so on) to create the shape and form for a particular design.

29



Individual chair model AC80 can be considered as the matching chair for TRIANGOLO sofa. The "A" version, AC80A, can match the color contrast scheme of any TRIANGOLO sofa.

It has an additional design element (which TRIANGOLO sofas don't have) that the chair seat top also features the contrast-strap pattern sewing effect.



The "B" version, AC80B, is the special edition. It features the "gold" or "silver" color leather-straps.



SXR

4LA

Leather: 9401/9434 (subject to availability)

34

RAGGIO I 0479

35





RAGGIO means "beam of light." The "contrast-strap pattern sewing" feature becomes the design highlight of Model RAGGIO. The leather straps appear to look like "paths of light beams" when they are "projecting" and "reflecting" throughout the outer-frame of Model RAGGIO.

Model RAGGIO I is the first version of the model. It can be custom-made with different "light-beam" (contrast-color leather straps) colors which inspires your imagination that different colors of "laser light-beams moving" along the sofa frame.

Optional headrest delivers additional neck support.



Optional stool (item no. ST2) always comes with a design that matches the sofa seat front frame and legs.



4D   1D

Leather: 0519/0570/89M1-4D (subject to availability)
Leather: 0570/0519/89M1-1D (subject to availability)

40 RAGGIO II 0480





Optional coffee table (item no. STG3) always comes with a design that matches the sofa seat front frame and legs.



Model RAGGIO II is the second version of the model that features the "gold" or "silver" color genuine leather straps on the sofa frame.



To contrast metallic leather, snow white or charcoal gray color are always the popular choices.

Model RAGGIO II also presents an creative idea of how to apply fashion materials like "gold" or "silver" color genuine leather on a contemporary style sofa.



SCIMMIA means "monkey." For the most part of 2016, it's the year of "monkey," according to Chinese zodiac. The design of Model SCIMMIA, as a part of the KELVIN GIORMANI 2016 collection, was inspired by the special shapes and forms of monkeys.

The "contrast-strap pattern sewing" technique has outlined the facial expression of a monkey on the sofa back front and seat top.



The generally skinny style of Model SCIMMIA's frame well resembles the slim body shape of a monkey.

Model SCIMMIA's long and "bendy" legs stimulates your imagination of how flexible the arms, legs and tail of a monkey are.



KELVIN GIORMANI



Leather: 9418 (subject to availability)

MODULI V 0488



Model MODULI V is the fifth version of the model. The design highlight of this version is the brand new leather-crafting feature named "pattern embossing." The original-design of the pattern on the back cushion front was inspired by "Sea Fan," a well-known species of sea coral.



"Pattern embossing" is a leather embossing technique. It's realized by high-frequency pressing technology with machines.

Model MODULI comes with head-mechanisms from Hettich Germany.

ARMR

ARML

0487B-1CHM

4CHM

Leather: 9418-ARMR+4CHM+ARML (subject to availability)
Leather: 9418/89M1-0487B-1CHM (subject to availability)

52

MODULI I 0485



53



Model MODULI I is the minimalistic version of the model. The back cushion is free of any leather-crafting feature. For the rest of the versions of Model MODULI, the back cushion front will appear to have different fashionable leather-crafting features.



Model MODULI comes with head-mechanisms from Hettich Germany.



Optional stool (item no. ST2) always comes with a design that matches the sofa seat cushions and seat front frame.



Model MODULI IV is the fourth version of the model. It features the "gold" or "silver" color genuine leather ornament appearing on the "zig-zag pattern sewing." This feature will be presented at the back cushion front.



CT 3CHM

4CHM 1XCHM

ARMR

Leather: 7517 (subject to availability)

60 MODULI III 0487A

61





MODULI means "modules." Model MODULI is meant to be an armless model like Model PISA and Model LARGO from the 2016 Collection. The difference is that Model MODULI has an optional arm (item no. ARML or ARMR) just in case consumers prefer conventional arm-included sofas.

Model MODULI III is the third version of the model. It features the new leather-crafting feature named "zig-zag pattern sewing alternately perforated."

The optional arm consists of an ultra-thin (around 4cm) arm-frame which is realized by the 5mm thick & strong solid metal plate being upholstered with soft genuine leather. Like the arm-frames of Model PIANA from the 2016 Collection, it's more than capable of supporting an adult sitting on it continuously. This feature creates additional casual-sitting space in a living rooms while friends are visiting.

Model MODULI comes with head-mechanisms from Hettich Germany.



The level-6 seating comfort is for those who likes soft seating.

Optional square stool (item no. CT) is a nice alternative to a coffee table to be placed at the center of a large sofa composition.



4CHM

Leather: 0535/89M2 (subject to availability)

64

MODULI II 0486

65



Model MODULI II is the second version of the model. It features the "large diamond-shape perforation" on each back cushion front. It is the first time that this feature is applied onto soft cushions. In this version, the back cushions must always be made with "gold" or "sliver" color genuine leather.



Since Model MODULI is armless by nature, both sides of each item are finished with genuine leather. With the cubic and armless appearance of Model MODULI, it's very flexible for consumer to interchange between the left-oriented and right-oriented direction of the sofa set.

The back cushions of Model MODULI has a free-styling design. There is genuine leather on both sides, and the back cushions are not fixed by zippers; therefore, when they are flipped to the other side, they can be presented in a different color.



Leather: 5208 (subject to availability)

PIANA I H0481



PIANA means "flat" or "levelled." The name comes from the wide and flat arm as a design feature of Model PIANA. Model PIANA I is the minimalistic version of the model. For the rest of the design variations will appear on the lower back cushion front in form of different fashionable leather-crafting features.

The ultra-thin arm-frame of the sofa is as levelled as the seat cushion. A soft feather-filled arm cushion is placed on each arm-frame that creates additional comfort when lying on the sofa.

The ultra-thin (around 4cm) arm-frame is realized by the 5mm thick & strong solid metal plate being upholstered with soft genuine leather. It's more than capable of supporting an adult sitting on it continuously. This feature creates additional casual-sitting space in a living rooms while friends are visiting.



Optional coffee table (item no. STG3) always comes with a design that matches the sofa seat front frame and legs.



Three options of legs are available. The bend wood design legs come with 6 different wood colors to choose from.

Satin finish stainless steel leg is always a popular choice when it comes to metal legs.



PIANA I H0481



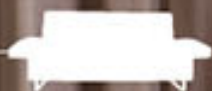
PIANA III S0483A



PIANA II M0482

Dark nickel color finish stainless steel leg is a good option to contrast lighter color leather.

4D



Leather: 9418 (subject to availability)

PIANA III S0483A

75





Model PIANA III is the third version of the model. It features the new leather-crafting feature named "zig-zag pattern sewing alternately perforated," which appears on the lower portion of the back cushion front.

Model PIANA is also considered to be a high-back sofa while its back height is over 60cm.



Optional stool (item no. ST2) always comes with a design that matches the sofa seat front frame and legs.



Leather: 7525 (subject to availability)

Model PIANA II is the second version of the model. It features the "leaf-grain" pattern quilting (stitching) which appears on the lower portion of the back cushion front.



Leather: 0570/0538/89M2 (subject to availability)

PIANA IV S0483B

Model PIANA IV is the fourth version of the model. It features the "gold" or "silver" color genuine leather ornament appearing on the "zig-zag pattern sewing."

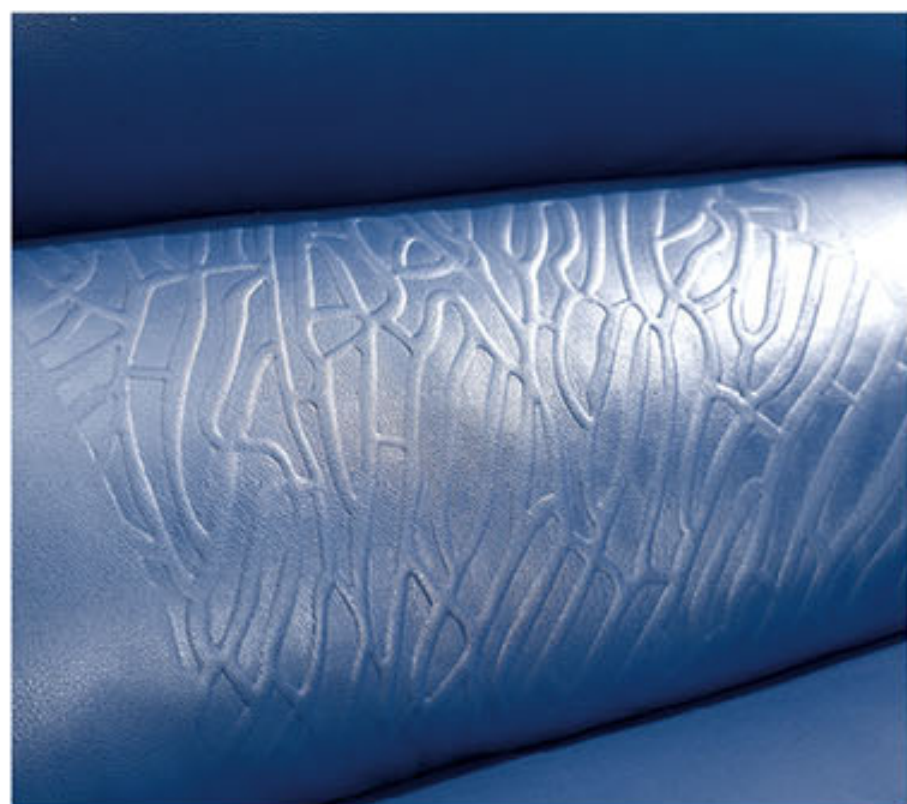


Leather: 0589 (subject to availability)

PIANA V S0484



Model PIANA V is the fifth version of the model. The design highlight of this version is the brand new leather-crafting feature named "pattern embossing." The original-design of the pattern on the lower back cushion front was inspired by "Sea Fan," a well-known species of sea coral.



"Pattern embossing" is a leather embossing technique. It's realized by high-frequency pressing technology with machines.



KELVIN GIORMANI

M0495-1D

4D

Leather: 0575/89M1/89M2-4D (subject to availability)
Leather: 0575/89M1-M0495-1D (subject to availability)

PISA III M0490B

85





Model PISA is an ultra-high back model (100cm height), the first one from KELVIN GIORMANI Collection since 2012, to create an unusual seating comfort and experience. The name, PISA, is given because of the tall and incline appearance of the sofa back frame side that resembles The Tower of Pisa in Italy.

It's an armless style WITHOUT optional add-on-arm available. It's the first time appearing of this style in KG collection. Back cushions are in form of large feather-filled free pillows.

Model PISA III is the third version of the model. It features the "gold" or "silver" color genuine leather ornament appearing on the "zig-zag pattern sewing."

Optional coffee table (item no. STG3) always comes with a design that matches the sofa seat front frame and legs.



LARGO IV M0495

To match such an exceptional ultra-high back sofa, we suggest to use individual chairs with a lower back but a matching design. They come from Model LARGO, which can be considered as the lower back version of Model PISA.

3D

Leather: 3128/3186 (subject to availability)

88

LARGO I H0493



89



The name LARGO means "wide" or "spacious," which tells you that Model LARGO is a very space efficient (seating space) model. It's the lower-back version of Model PISA.

Model LARGO I is the clean and contemporary version of the model. It features the contrast-strap stitching on edges of the back frame which Model PISA does NOT have.



Leather: 0586/0686/0505 (subject to availability)

Having a similar design idea, Model LARGO is like Model PISA which is meant to be an armless sofa model. As a result, the back-front and back-side frames become key portions for expressing the aesthetics of the model. Why not customizing those portions with crocodile-print leather to add some fashion elements to the model!



SXR

4LA

Leather: 9423/9433 (subject to availability)

LARGO II S0494A

97





Another difference between Model LARGO and Model PISA is that the back cushions of Model LARGO are fixed by zippers in a conventional way.

Model LARGO II is the second version of the model. It features the new leather-crafting feature named "zig-zag pattern sewing alternately perforated."



Optional stool (item no. ST2) always comes with a design that matches the sofa seat front frame and legs.



Leather: 0505/0586 (subject to availability)

LARGO V H0496



Three leg options are available. Dark nickel color finish stainless steel leg is a good option to contrast lighter color leather.

Satin finish stainless steel leg is always a popular choice when it comes to metal legs.



LARGO IV M0495



LARGO II S0494A



LARGO V H0496

The solid wood leg option comes with 6 different wood colors to choose from.



Model LARGO V is the fifth version of the model. It features the "large diamond-shape perforation" on each back cushion front. It is the first time that this feature is applied onto soft cushions.



Leather: 0564 (subject to availability)

PACECO IV M0456A



The design idea of Model PACECO is to create a motion sofa model which has relatively thin arm to offer a choice to consumers if they prefer a slimmer and a lighter look for their motion sofa set. Model PACECO IV is the fourth version of the model. The width of the arm is just 15cm.

The application of the special "blanket stitching" on the sofa arms is adding a vivid element to the minimalistic arm design of Model PACECO IV. Contrast color stitching is recommended.

The fully automatic reclining and head mechanisms are powered by MOTION ITALIA S.r.l.

Each reclining or head mechanism is controlled independently by an individual switch (electrical), which lets you create your best reclining pitch for different seating purposes.





Leather: 0521 (subject to availability)

106 PACECO VII M0461



The design idea of Model PACECO VII is to create motion sofa sets in round compositions, which are rarely found in the market. The concept is connecting the regular motion item, such as 1.5LA, 1.5RA and 1.5C, with round-shape and non-motion item, such as 1.5CR and CT, which gives you a visual impression that it is a round-shape composition.

Adding the fashionable leather-crafting feature named "curve-strip sewing alternately perforated" onto the back cushion front gives the motion sofa composition more "round" design elements.

The round coffee table (RTG3) comes with the "curve-strip sewing alternately perforated" feature at the frame. It well matches the design idea of the motion sofa set. The special wheel-legs enable the easy movement of the coffee table just in case it gets in the path of the moving recliner foot panels.

The fully automatic reclining and head mechanisms are powered by MOTION ITALIA S.r.l.

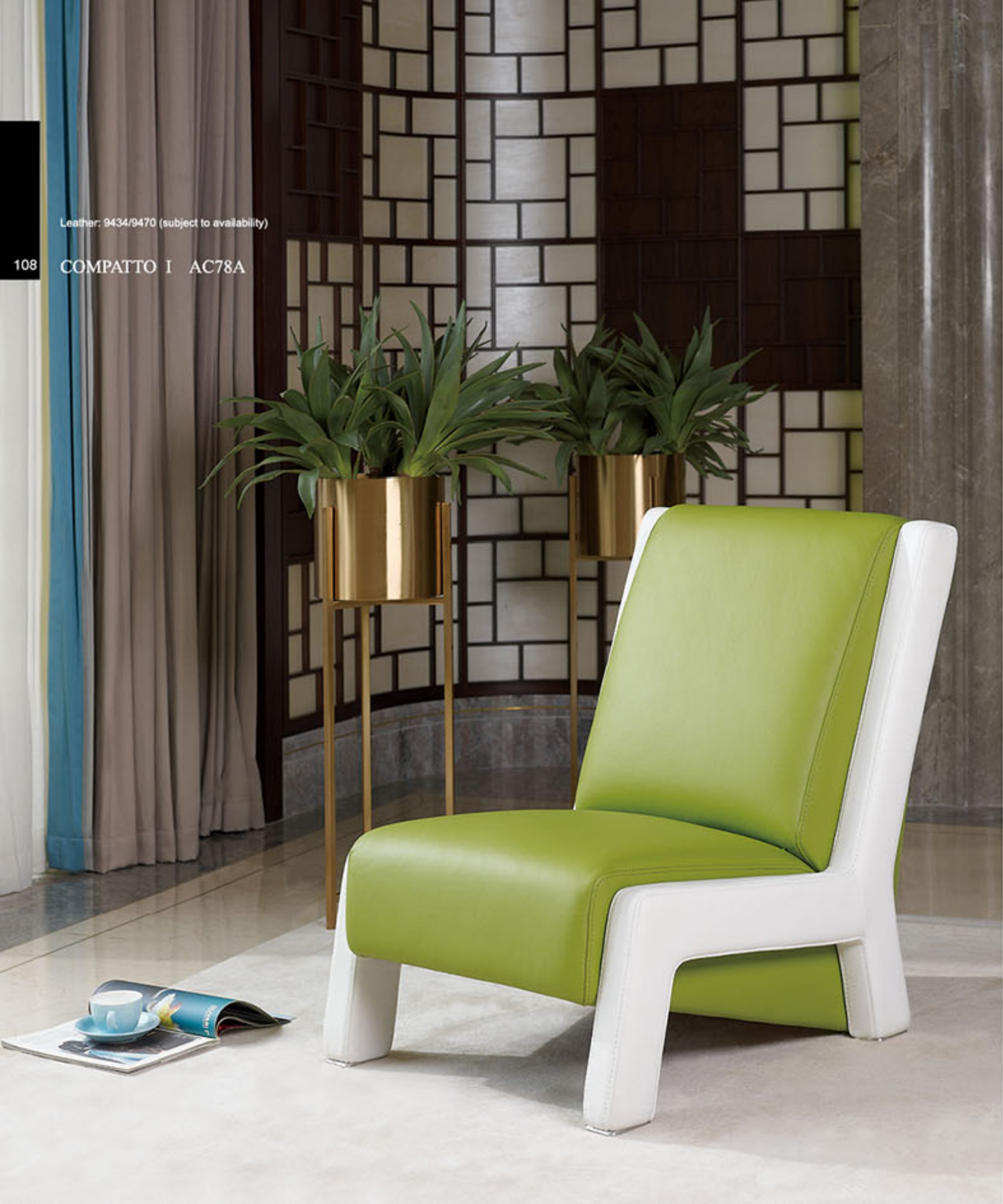
Each reclining or head mechanism is controlled independently by an individual switch (electrical), which lets you create your best reclining pitch for different seating purposes.



107

Leather: 9434/9470 (subject to availability)

108 COMPATTO I AC78A



COMPATTO means "compact." Model COMPATTO is a single chair with a very slim chair frame which makes it a nice multi-purpose chair. AC78A is the minimalistic version (see page 108).

AC78D features the "small zig-zag stitching" on the chair frame at both sides of the chair. Don't forget to contrast the stitching color from the leather color to show off this special zig-zag stitching!

Optional foot stool delivers extra comfort of resting your legs.



Leather: 7517 (subject to availability)
COMPATTO IV AC78D



Leather: 0560 (subject to availability)
COMPATTO II AC78B

AC78B (see the photo on the right) features the new leather-crafting effect named "zig-zag pattern sewing alternately perforated" on the back front and seat top & front.

Leather: 0561 (subject to availability)

SALIRE I AC79A



SALIRE means "rise." Model SALIRE borrows the design idea of Model COMPATTO and becomes an armchair. It has a pair of free-standing arms that are like "rising" up from the base and pointing upward.

AC79A is the minimalistic version (see page 110)

AC79C features the "gold" or "silver" color genuine leather ornament appearing on the "zig-zag pattern sewing" on the back front and seat top & front (see photo on the right).



Leather: 0505/89M1 (subject to availability)

SALIRE III AC79C



Leather: 9449 (subject to availability)

SALIRE II AC79B

AC79B features the new leather-crafting feature named, "zig-zag pattern sewing alternately perforated" at the back front and seat top & front.

Leather 9434 (subject to availability)

112 GRANDE AC81



GRANDE means "grand." Model GRANDE is a high-back armchair with a nice-and-curved general body shape. "Small zig-zag stitching" is a standard feature of the armchair. The leg is made with satin-finish stainless steel. Optional foot stool delivers extra comfort of resting your legs.

Leather: 9470/9477/9490/9404/9449 (subject to availability)

OPERA I AC82A



Leather: 0570/0531/0506/0504/0532 (subject to availability)

OPERA II AC82B



The design of the single chair, Model OPERA, was inspired by the art of Peking (Beijing) Opera, which was awarded the World's Intangible Cultural Heritage status by UNESCO in 2010. The striking color combination and color contrast of the masks appearing in the performance of Peking Opera becomes an excellent idea for creating the genuine leather "cut-and-stitch" graphics.

Two different "cut-and-stitch" graphics are presented this time. Each one of them is placed at a chair back of Model OPERA. AC82A is associated with a male-oriented graphic, and AC82B is associated with a female-oriented graphic.

The genuine leather "cut-and-stitch" is a leather-crafting technique that is the first time being applied in a KELVIN GIORMANI design.

ARREDAMENTI COMPANY LTD.

Hong Kong Headquarter

Address: 6/F., Yan Hing Centre, 9-13
Wong Chuk Yeung St., Fo Tan, N.T., Hong Kong
Tel: 852 2690 3884
Fax: 852 2947 0835

China Factory

Address: Pan Shan, Da Ling Shan,
Dong Guan, Guang Dong, CHINA
Tel: 86 769 8560 4810
Fax: 86 769 8335 3409

Website

www.kelvingiormani.com